

EMAR CHAFF DECK – FITTING INSTRUCTIONS FOR CLAAS LEXION WITH RADIAL STRAW SPREADER



REMOVAL OF CHAFF SPREADER.....



Step 1:
Remove hydraulic hose clamp.

Step 2:
Follow hydraulic hoses up, the hoses have joiners, this is where you will be disconnecting.
Plug hoses or drain tank to prevent oil loss.

Step 3:
Unplug electrical sensor wiring on RHS (not shown in photo).

Step 4:
Remove the two front straps, holding spreader.



Let spreader hang down, the next step is to remove pivot pin – as per photo.
Warning: Spreader is heavy!
Spreader locking pin can remain in place.



Remove tow hitch. This can be refitted at a later stage. SAVE BOLTS



Sit chaff deck hitch up and fit 4 x 16mm bolts.
Drill two top bolts holes – 16mm.

There are two triangular pieces of plastic. They are for extension to the tray off the sieves. Fit before fitting decks.



Drill three x 6mm holes each side.



Lift main frame up and put the two pins in that are supplied.

Fit the two side support bars and tighten.

Fit the left & right under deck frames. (Leave the adjuster bolts loose)



At this stage, it is easier to fit one of the hydraulic hoses in the kit. There will be one with two male quick couplers on each end. Get the hose, find the centrepoin, start clamping it on from the centre, then down each under deck frame.

Fit centre divider, held in with one R Clip.

Then add rubber curtain extension. (It is important to get curtain sitting on the edge of the decks, where arrow is pointing. This is to help with sealing.)



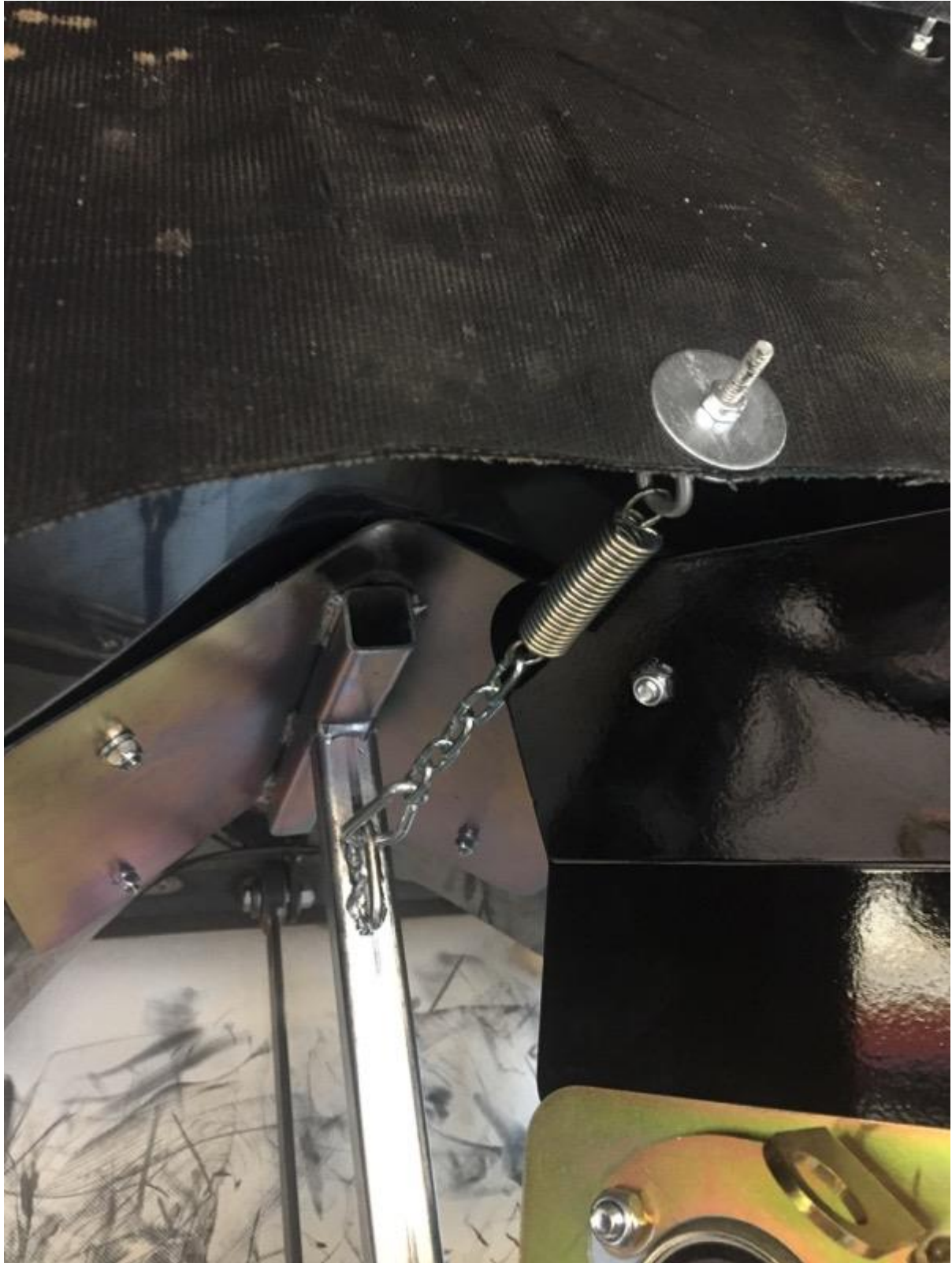
Tip:

We use vice grips each side of the rubber to get it sitting right.

Then mark holes, remove, drill 6mm holes, then refit with bolts, washers & nuts (all supplied). Large washers on each side of rubber.

Fit eye bolt, spring chain & latch.

It is important to adjust this to allow for spring tension on spring. This keeps the rubber curtain sealed around centre divider.



Cut excess chain off.

HYDRAULICS

Fit hydraulic flow control bracket to machine as in photo. You may have to drill 8mm hole for front bolt. Some machines have bolt hole, longer bolt provided for rear hole.

Assemble 3 fittings into flow controller.

INSERT DRAWING – Hydraulic Flow Controller

Then bolt to bracket (bolts in kit).

When fitting hydraulic hose on flow controller, make sure you follow hose back, it's the one that goes to the pump.



Fit hydraulic filter bracket, filter head and filter.



There is an arrow on filter head direction of flow, have it pointing forward.

When fitting outlet hose to the Combine, follow hose back and make sure it is the one going to the hydraulic tank.

ELECTRICS

There is a Y cable supplied in Kit. This cable connect into the chaff spreader harness (this is the cable you disconnected when removing chaff spreaders)



Note: Hydraulic straw spreader sensor is on LHS as in picture.

Mechanical drive straw spreader sensor is on RHS (not shown).

Remove panel off straw spreader & find sensor. Plug other-end of Y harness into this sensor. The harness you remove from this sensor will then plug into remaining plug in new Y harness. (This is to trick computer so alarms don't sound, because the chaff spreader has been removed.)

FARM SCAN MONITOR

Fitting Harness's

Run harness down LHS of machine up into cab.

Plugs are designed to be around the flow controller.

Connect monitor up as per Farmscan Manual (2 x Tacho Shaft Speeds)

Program

Minimum Speed 400 RPM

Maximum Speed 1000 RPM

Ideal deck speed is 600-800 RPM.

Plug hydraulic hoses & electrical harness in, then use spiral wrap to tidy up.

Keep all LHS hoses and cable together, and all RHS cable together.

This is so you can remove one deck, if you need to get into the back of Combine.



Note: Make sure there isn't any tension on electrical harness.

Fit LHS cover

Drill 8mm hole for this side.



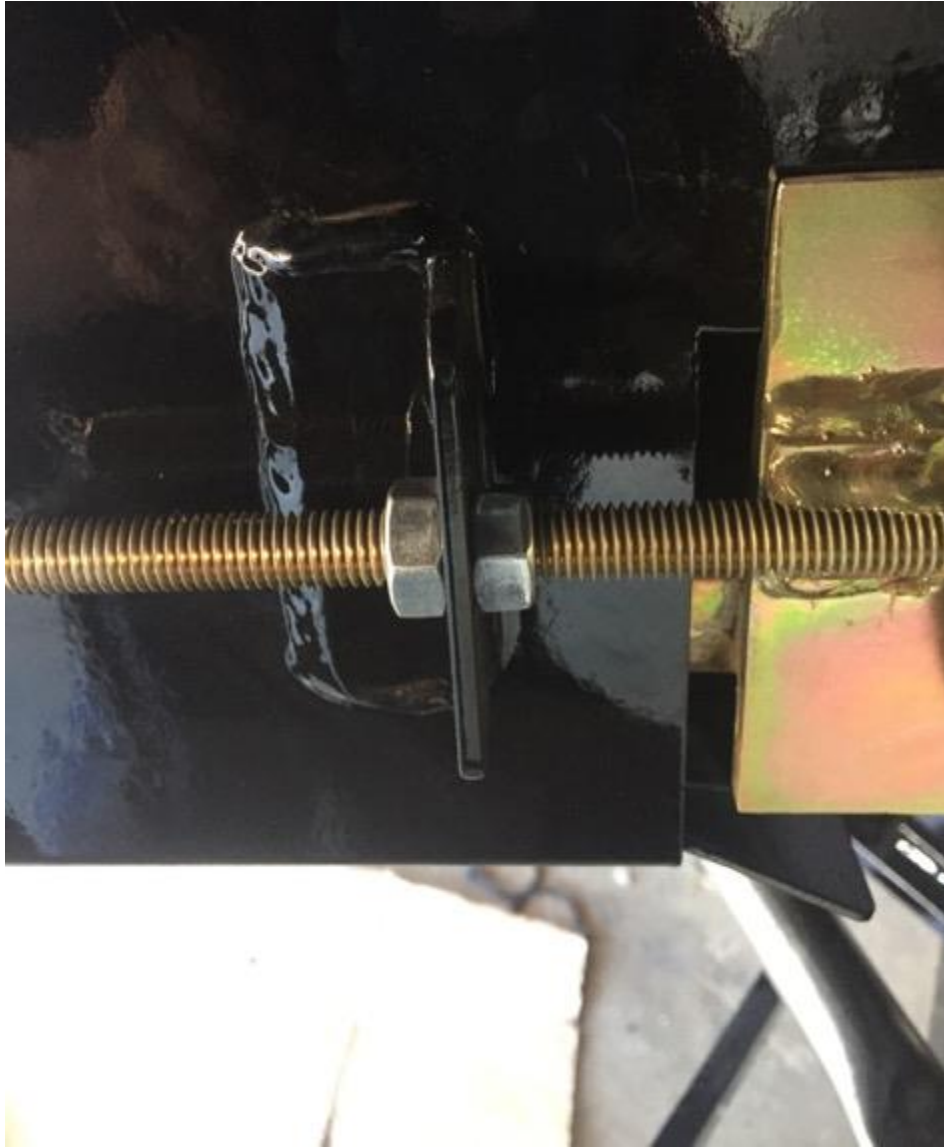
Fit RHS cover.



BELTS

When tensioning belts for the first time, set the idler rollers up with around 5-10mm gap on both sides as per photo.

Lock off – tension down at hydraulic motor ends.



WARNING
Ensure leading edge tags bend down.

Mainly at hydraulic motor end.

TENSIONING

Too loose – belt slips

Too tight – hydraulic motor can stall.

TRACKING

Belts are V Tracked, so it's not so critical to be perfect. Tension evenly each side.

Adjust turn buckle to get the desired width, then lock off.

Fit rear shields & plastic covers.

NOTE:

You may be required to trim rear rubber curtain to suit your requirements.